

Gaber®

Finishes 2024

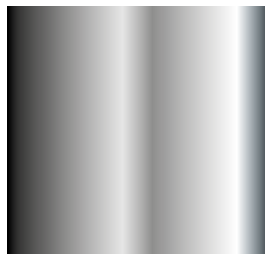
COLOURS AND FINISHES

COLORI E FINITURE

Techno-polymer / Tecnopolimero

							
05 Light blue / Azzurro	99 Lavender / Lavanda	98 Pale blue / Avio	34 Light blue / Azzurro	08 Blue / Blu	09 Dark Blue / Blu scuro	16 Indigo / Indaco	11 Night Blue / Blu notte
							
03 Light green / Verdino	42 Green / Verde	51 Sage green / Salvia	35 Lime / Lime	41 Green / Verde	25 Olive Green Verde Oliva	23 Military green Verde militare	24 Forest green Verde foresta
							
36 Mustard / Senape	02 Yellow / Giallo	38 Saffron / Zafferano	07 Apricot / Albicocca	33 Orange / Arancione	20 Lobster / Aragosta	06 Red / Rosso	12 Brick / Mattone
							
26 Marsala / Marsala	22 Bordeaux / Bordeaux	01 Beige / Beige	54 Sand / Sabbia	18 Dusty Rose Polvere Rosa	13 Brown / Marrone	52 Turtledove / Tortora	55 Mineral Grey Grigio Minerale
							
39 Brown / Marrone	00 White / Bianco	14 Pearl grey / Grigio perla	04 Grey / Grigio	21 Grey / Grigio	10 Black / Nero		
							
46 Transp. green Verde trasp.	45 Transp. red Rosso trasp.	47 Transp. Amber Ambra trasp.	44 Transparent Trasparente				

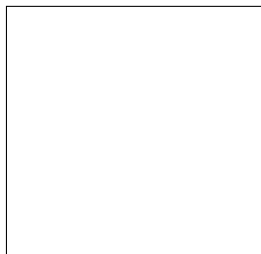
Metal finishes / Finiture metalli



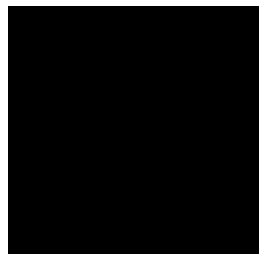
C
Chromed / Cromato



S
Satin / Satinato



B
White / Bianco



N
Black / Nero



D
Gold / Oro



98
Pale blue / Avio



16
Indigo / Indaco



35
Lime / Lime



02
Yellow / Giallo



06
Red / Rosso



12
Brick / Mattone



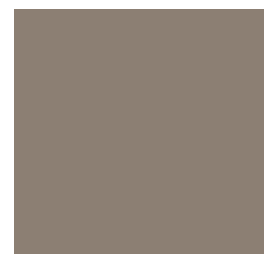
22
Bordeaux / Bordeaux



54
Sand / Sabbia



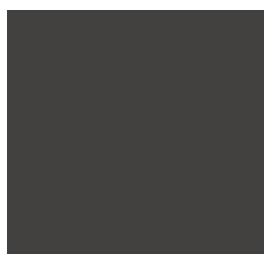
18
Dusty Rose / Polvere Rosa



55
Mineral Gray / Grigio Minerale



14
Pearl Grey / Grigio Perla

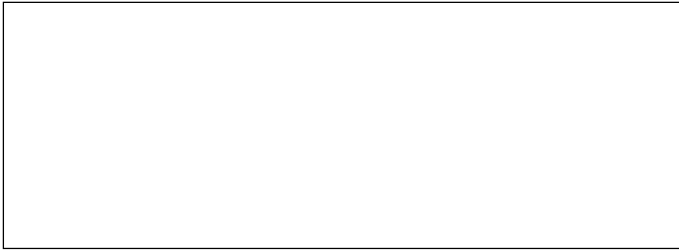


21
Grey / Grigio Antracite

COLOURS AND FINISHES

COLORI E FINITURE

Bases and frames wooden finishes / Finiture legno basi e telai



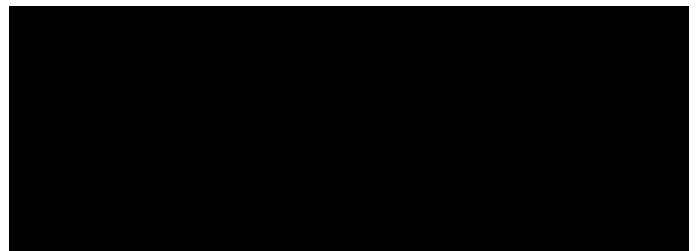
00 White stained / Bianco



F Natural Beech / Faggio naturale



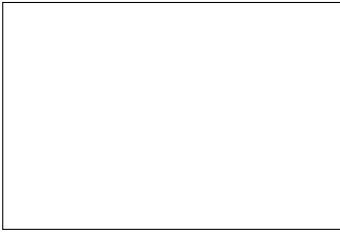
RN Natural Oak / Rovere Naturale



10 Black stained / Nero

F-00-10 finishes arise from Beech Essence. RN finish come from Oak Essence
Le finiture F-00-10 derivano da essenza di Faggio. La finitura RN deriva da essenza di Rovere.

Standard Compactop Surface



00

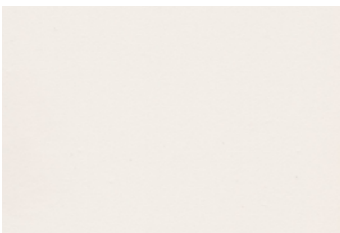


10

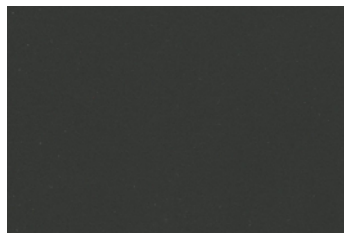


14

Special Compactop Surface Fenix - www.fenixforinteriors.com

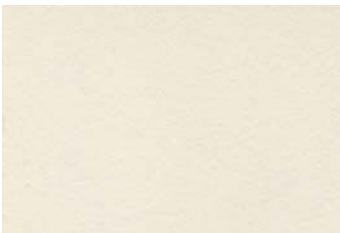


0029

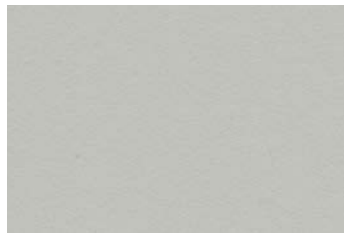


0720

Special Compactop Surface - Solid - www.arpaindustriale.com



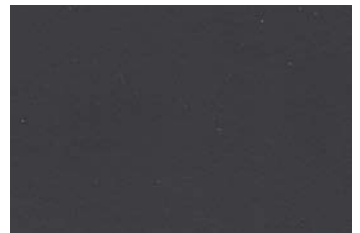
244



527



247



526

Special Compactop Surface - Wood Effect - www.arpaindustriale.com



4529



4543



4587

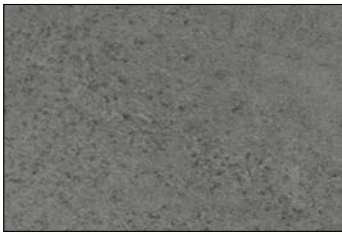


4511

COLOURS AND FINISHES

COLORI E FINITURE

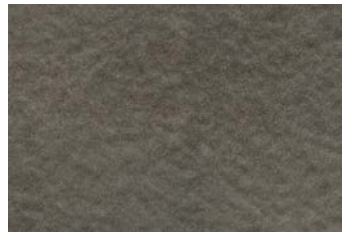
Special Compactop Surface - Stone, Concrete and Marble Effect - www.arpaindustriale.com



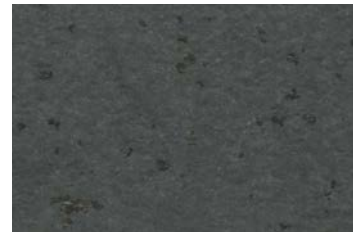
3192



3349



3276



3329



5547

Special Compactop Surface - Marble Effect - www.lamicolor.it



6075



6076



6089

Standard Laminated Surface



F



RN



W



00



10

Special Laminated Surface - Wood Effect



B01



X41



61M



V32

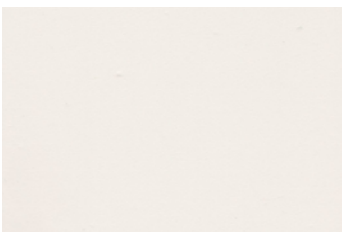


WG8

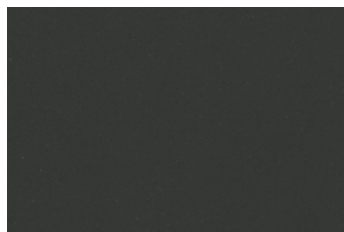


WG9

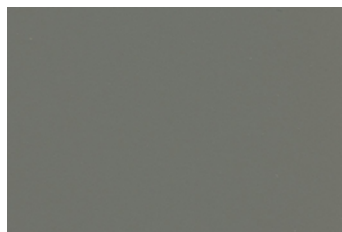
Special Laminated Surface - Fenix - www.fenixforinteriors.com



0029



0720



0718



2630



2629



2628

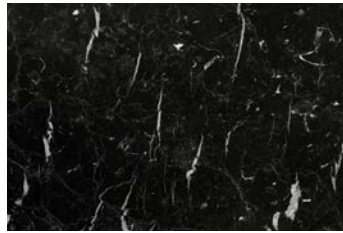
COLOURS AND FINISHES

COLORI E FINITURE

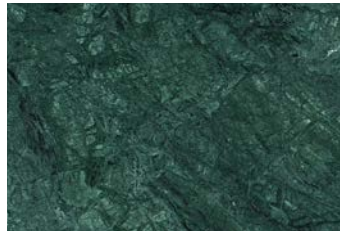
Marble Surface



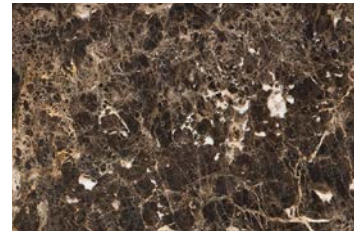
MBC - BIANCO CARRARA



MNM - NERO MARQUINA



MVG - VERDE GUATEMALA



MED - EMPERADOR DARK

Porcelain Surface



PCO - CALACATTA ORO



PNG - NERO GRECO

K King Fabric / Tessuto King



6001

6091

6034

6052

7019

7022



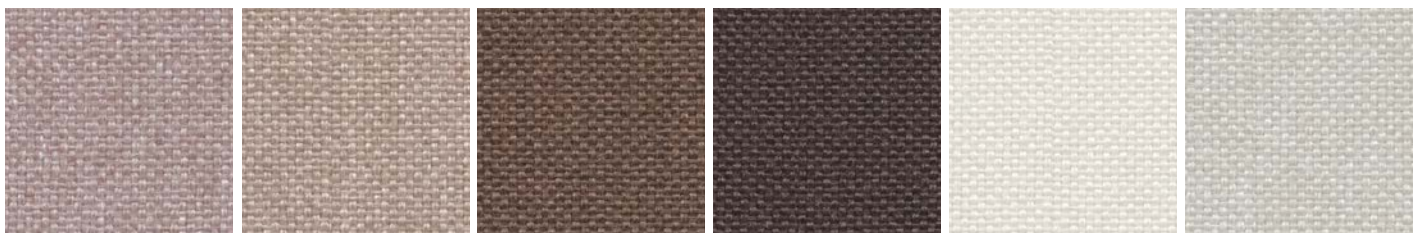
3030

3082

4021

4032

5001



1033

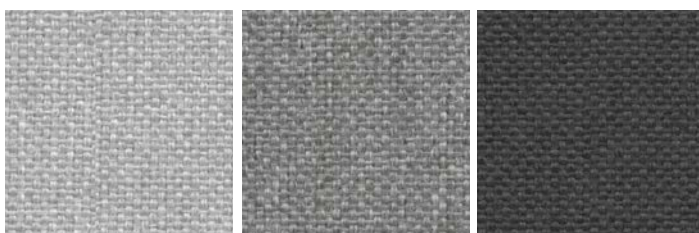
1008

2003

2007

1012

1025



8032

8006

8011

- Composition: 100% POLYESTER - TREVIRA CS
- Abrasion: UNI EN ISO 12947-2 80.000 Cycle Martindale $\pm 10\%$
- Light Resistance-Xenotest: UNI EN ISO 105-B02 / 6 (tol from 5 to 8)
- Fire proof: UNI 9174 - 8456 Class C1, UNI 9175 Class 1, DIN 4102 Class B1, NF 92501-7 Class M1, NF D 60013, 1IM (UNI 9175) Class AM18, EN 1021-1 & 2, BS Crib 5, BS 7176 Class Medium Hazard, EN 13773 Class 1, OENORM 3800-1 Class B1,Q1,TR1, California TB117, USA NFPA 701, USA NFPA 260, IMO A 652 (16) Part 8 Upholstery
- Maintenance: Standard 60° C cotton cycle.

Visit www.fidivi.com for complete colours range / Visionate la completa gamma colori su www.fidivi.com

COLOURS AND FINISHES COLORI E FINITURE

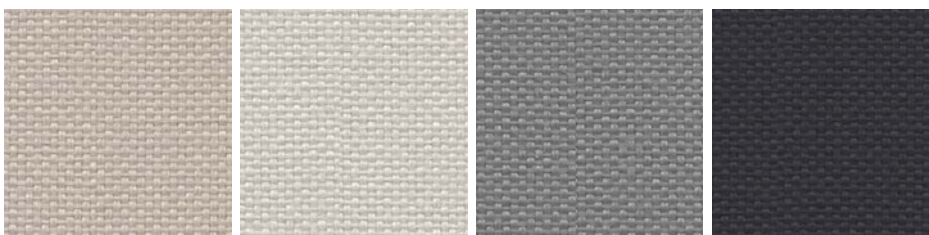
L King L Fabric / Tessuto King L



6071

3090

4027



1010

1025

8014

8010

- Composition: 100% POLYESTER
- Abrasion: UNI EN ISO 12947/2 70.000 Cycle Martindale $\pm 10\%$
- Light Resistance-Xenotest: UNI EN ISO 105-B02 / 6 (tol from 5 to 8)
- Fire proof: UNI 9174 - 8456 Class C1, DIN 4102 Class B1, NF P 92501-7 Class M1, IMO Res. A652 (16), NF D 60013 Class AM18, EN 1021-1 & 2, BS 5852 part II Crib 5, BS 7176 Medium Hazard, ONORM B 3825-Onorm A 3800-1 Class B1-Q1-TR1, Euroclass EN 13501-1, EN 1021-1 & 2, 1IM (UNI 9175), California TB 117
- Maintenance: Use vacuum-cleaner, don't brush.

Visit www.fidivi.com for complete colours range / Visionate la completa gamma colori su www.fidivi.com

DK Kvadrat Fabric (Steelcut3) / Tessuto Kvadrat (Steelcut3)



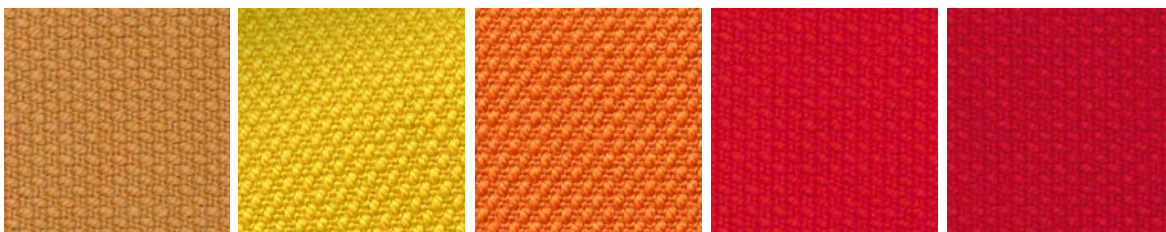
672

732

780

932

975



252

445

535

545

552



220

240

365

605

655



110

140

155

180

190

- Composition: 90% New wool worsted - 10% Nylon
- Abrasion: 100.000 Martindale rubs, EN ISO 12947
- Lightfastness: Note 5-7, ISO 105-B02
- AS/NZS 1530.3, BS 5852 crib 5 with treatment, BS 5852 part 1, IMO FTP Code 2010 Part 8, NF D 60 013, NFPA 260, SN 198 898 5.3 with treatment, UNI 9175 1IM, US Cal. Bull. 117-2013, EN 1021-1/2, AS/NZS 3837 class 2, ÖNORM B1/Q1, ASTM E84 Class A Unadhered, ASTM E84 Class B Adhered

Visit www.kvadrat.dk for complete colours range / Visionate la completa gamma colori su www.kvadrat.dk

COLOURS AND FINISHES COLORI E FINITURE

DK Kvadrat Fabric (Remix3) / Tessuto Kvadrat (Remix3)



733

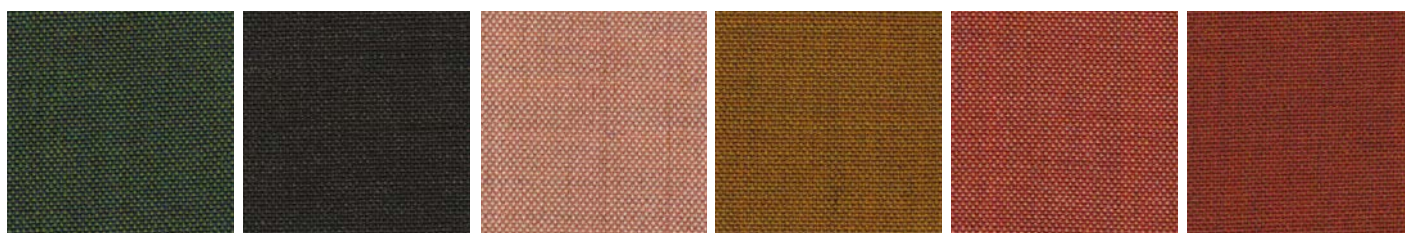
722

743

753

923

942



982

973

612

422

632

653



682

692

233

113

123

143



183

- Composition: 90% wool, 10% nylon
- Abrasion: Approximately 100.000 Martindale rubs, EN ISO 12947
- Lightfastness: Note 5-7, ISO 105-B02
- AS/NZS 1530.3, BS 5852 crib 5 with treatment, BS 5852 ignition source 3, BS 5852 part 1, IMO FTP Code 2010 Part 7 with treatment, IMO FTP Code 2010 Part 8, NF D 60 013, NFPA 260, SN 198 898 5.3 with treatment, UNI 9175 1IM, US Cal. Bull. 117-2013, EN 1021-1/2, AS/NZS 3837 class 2, ÖNORM B1/Q1, ASTM E84 Class A Unadhered, ASTM E84 Class A Adhered, GB 50222 B1 with treatment

Visit www.kvadrat.dk for complete colours range / Visionate la completa gamma colori su www.kvadrat.dk

S Superb Trevira Fabric / Tessuto Velvet-Velluto



5130

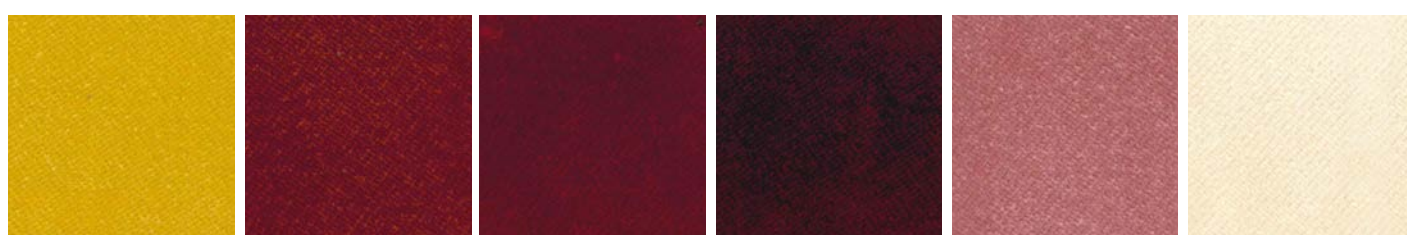
5127

5131

5140

5134

5135



5106

5112

5118

5119

5114

5103



5144

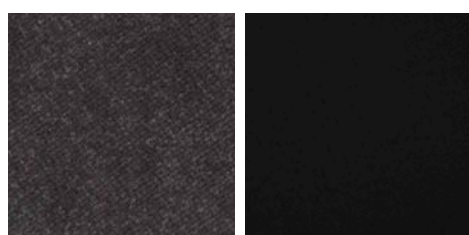
5143

5149

5142

5145

5152



5151

5147

- Composition: 100% POLYESTER - TREVIRA CS
- Abrasion: UNI EN ISO 12947-2 100.000 Cycles
- Light Resistance-Xenotest: UNI EN ISO 105-B02 ≥ 5 Blue Scale
- Fire proof: UNI 8456 - 9174 classe 1, UNI 9175 classe 11M, EN 1021-1 EN 1021-2, BS 5852 crib 5, DIN 4102 B1, NF P 92 503-507 M1, TB 117:2013 UNI EN 13773:2004 classe 1, NFPA 701:2015
- Maintenance: Dust gently or pass the surface with a damp cloth.

Visit www.flukso.it for complete colours range / Visionate la completa gamma colori su www.flukso.it

COLOURS AND FINISHES

COLORI E FINITURE

B Blazer Fabric / Tessuto Blazer



CUZ2Z

CUZ1E

CUZ86

CUZ47

CUZ1T

CUZ2R



CUZ3D

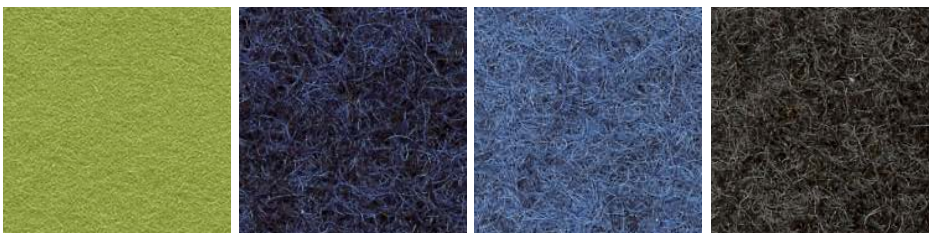
CUZ18

CUZ63

CUZ82

CUZ1N

CUZ1K



CUZ2X

CUZ62

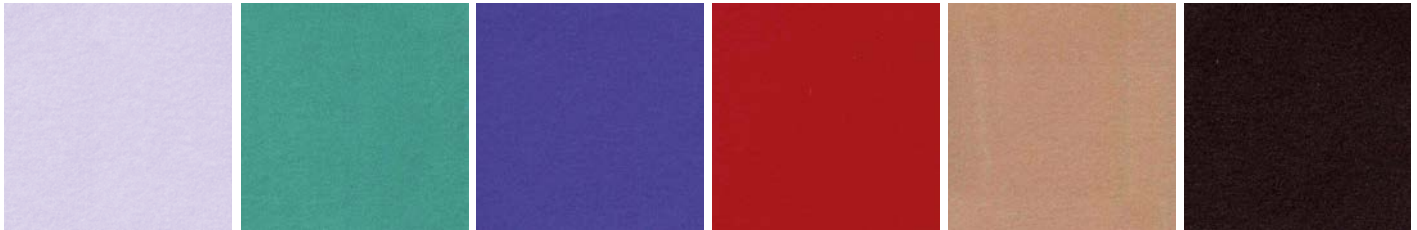
CUZ1W

CUZ67

- Composition: 100% VIRGIN WOOL
- Abrasion: BS EN ISO 12497-2 65.000 Cycle Martindale
- Light Resistance-Xenotest: UNI EN ISO 105-B02 / 5
- Fire proof: BS EN 1021 Part 1, BS EN 1021 Part 2, BS 7176 Low Hazard, BS EN 13501-1:2007 Class D, NF D 60-013 AM18, UNI 9175:2010 Class 11M, BS476 part 7 Class 1, ONORM B 3825, IMOFTP Code (part 8)
- Maintenance: Use the vacuum-cleaner.

Visit www.camirafabrics.com for complete colours range / Visionate la completa gamma colori su www.camirafabrics.com

M Miki Fabric / Tessuto Miki



6445

6490

6713

6432

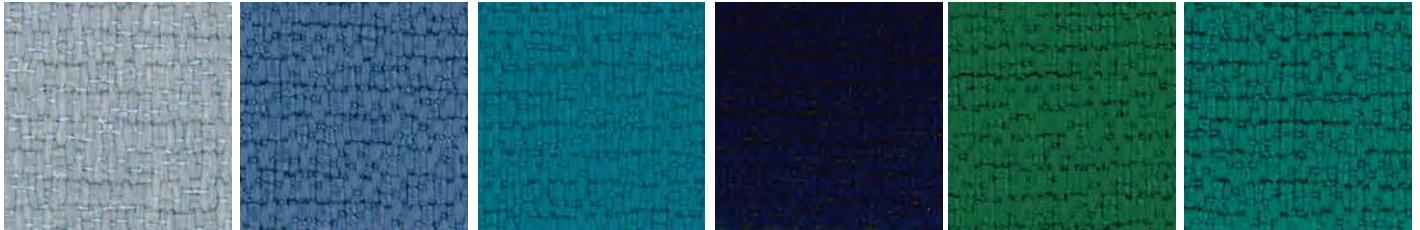
6334

NERO

- Composition: Composizione 100% PL 65/75 g/m² – Composition 100% PL 65/75 g/m²
- Light Resistance-Xenotest: UNI EN ISO 105-B02 / 01
- Maintenance: Dust with a soft and dry cloth.

COLOURS AND FINISHES
COLORI E FINITURE

FO Fortezza 93 Fabric / Tessuto Fortezza 93



30-1

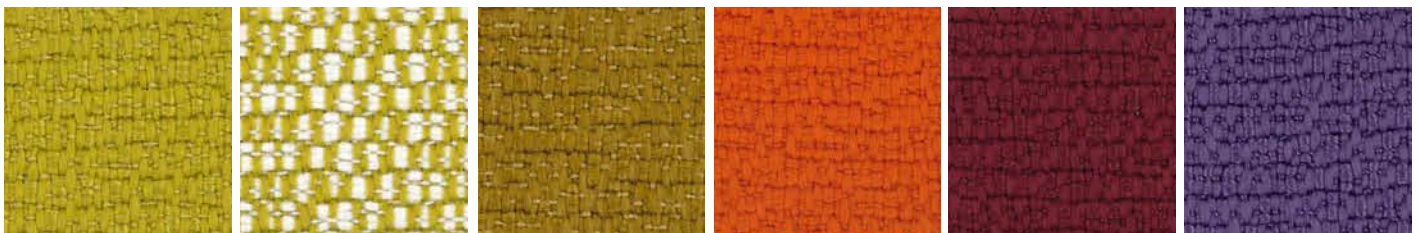
67-1

44-1

46-1

65-1

56-1



43-1

43-2

48-1

47-1

69-1

68-1



23-1

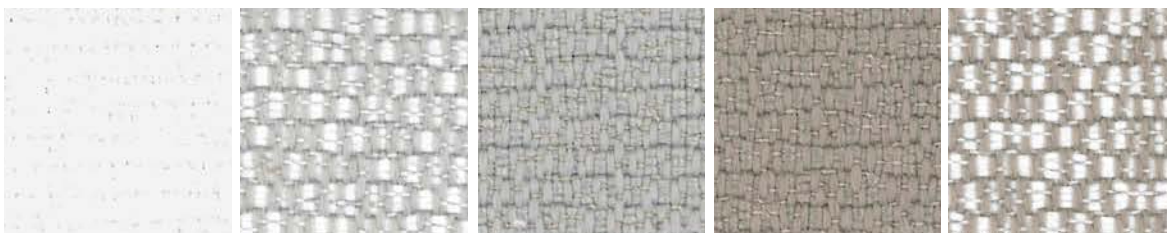
66-1

24-1

41-1

64-1

42-1



38-1

39-2

39-1

17-1

17-2

- Composition: 100% Polyolefinic
- Abrasion: UNI EN ISO 12947 35.000 rubs/cicli
- Seam slippage: BS 2543
- Pilling: UNI EN ISO 12945-2
- Colour fastness Dry Rubbing: UNI EN ISO 105-X12
- Colour fastness Wet Rubbing: UNI EN ISO 105-X12
- Light Fastness: UNI EN ISO 105-B02, UNI EN ISO 105-B04
- Colour Fastness to Sea Water: UNI EN ISO 105-E02:1996
- Colour Fastness to Chlorinated Water: UNI EN ISO 105-E03:2010
- Flammability: UNI 8456 - 9174 - CLASS 1 - ITALIAN FIRE SAFETY CLASSIFICATION - PASS, BS EN 1021.1:1994 - SOURCE 0 - CIGARETTE TEST - PASS, BS EN 1021.2:1994 - SOURCE 1 - BUTANE FLAME - PASS ON FR FOAM, T.B. 117 (2013): SECTION 1 POSITIVE, B1 ACCORDING TO DIN 4102, PART 1 (MAY 1998), NFPA 260:2013 - CLASS 1, IMO 2010 FTP CODE PART 8 - Resolution MSC 307(88) - Cigarette and Match Test, EN 13773 (2004) CLASS 1

Visit www.primafabrics.it for complete colours range / Visionate la completa gamma colori su www.primafabrics.it

GR Progarden Fabric / Tessuto Progarden



051
MEDITERRANEAN BLUE

026
PISTACHIO

028
OLIVE GREEN

012
LINEN

683
SLATE

- Composition: 100% yarn dyed acrylic
- Martindale (ISO 12947-2): 15.000 cycles
- Dimensional change after washing at 40°C and drying (warp/weft) (ISO 5077): ± 2%/0%
- Breaking strength (warp/weft) (ISO 13934-1): 200/70 daN
- Elongation at break (warp/weft) (ISO 13934-1): 25%/25%
- Tear strength (warp/weft) (ISO 13937-1): 7/3,7 daN
- Resistance to seam (warp/weft) (ISO 13935-1): 50/50 daN

- Air permeability (ISO 9237): 65 l/m²/s
- Finishing: Water repellent Teflon/Scotchgard treatment, dirt repellent and anti-mould treatment
- Spray Test (ISO 4920): 4 out of 5
- UV Colour fastness (ISO 105 B02): 5/8 out of 8
- Colour fastness to weather (ISO 105 B04): 5/8 out of 8
- Colour fastness after washing at 40°C (ISO 105 C06): 5 out of 5

Visit www.giovanardi.com for complete colours range / Visionate la completa gamma colori su www.giovanardi.com

SX Silvertex Fabric / Tessuto Silvertex



3066
BALTIC

5020
BASIL

1014
UMBER

0002
SANDSTONE

4004
ICE

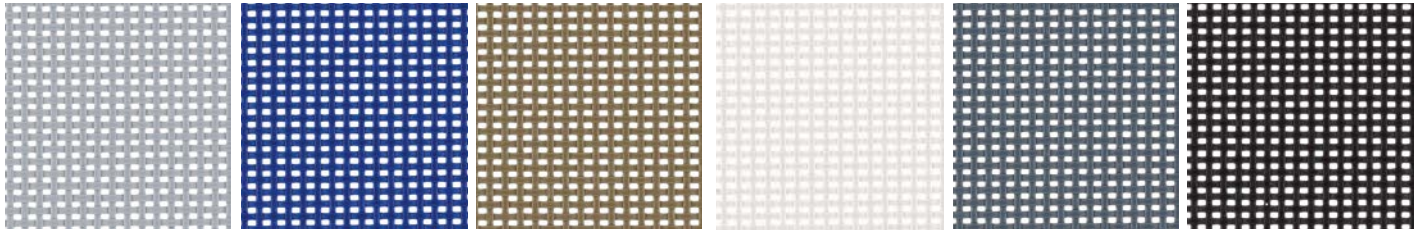
4003
GRAPHITE

- Composition: 100% Vinyl / Polyester Backing
- Abrasion: >300.000 cycles Martindale (EN ISO 12947:1999 Part 2)
- UV Resistance: ISO 105 B04 ≥ 4/5 (Grey Scale), ISO 105 B02 ≥ 7/8 (Blue Wool Scale)
- Flame Retardancy: EU: EN 1021 Part 1 & 2
DE: DIN 4102 B2 ECE Regulation No.118:03 (R118.02 Annexes 6, 7 & 8), ES: UNE 23.727-90 1R/M.2, FR: NF P 92-503/M2, IT: UNI 9175 (1987) / UNI 9175/FA1 (1994)
Classe 1.1M (UNO I EMME), AT: ÖNORM B 3825, Gruppe 1 - Schwerbrennbares Verhalten, AT: ÖNORM A 3800 Teil 1, Qualmbildungsklasse Q1 - schwachqualmend, IMO FTP 2010
Code MSC.307 (88) Part 8 3.1 & 3.2, (MED) Marine Equipment Directive (in its current valid version), EN 71-2:2006+A1:2007 - Safety of Toys - Parte 2: Flammability, US: CAL TB 117-2013, Section E, FMVSS 302, FAR 25/853

Visit www.spradling.eu for complete colours range / Visionate la completa gamma colori su www.spradling.eu

COLOURS AND FINISHES COLORI E FINITURE

R Mesh Fabric / Tessuto Rete



R08

R10

R09

R01

R03

R02

- Composition: Polyvinyl 70% - Polyester 30%
- Warp Tensile Strength: 310Kg/5cm
- Weft Tensile Strength: 270Kg/5cm
- Fire retardant on request

Visit www.plastitex.com for complete colours range / Visionate la completa gamma colori su www.plastitex.com

MG Maglia Vinyl Fabric / Tessuto Maglia Vinile



0003

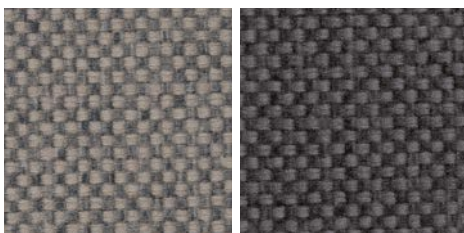
0406

4203

5001

6025

4537



1702

6016

- Composition: Vynil 100%
- Abrasion: >100.000 cycles Martindale (EN ISO 12947:1999 Part 2)
- Fire Proof: EN 1021 Part 1 & 2, UNE 23.727-90 1R/M.2, NF P 92-503/M2, DIN 4102 B2, UNI 9175 (1987) / UNI 9175/FA1 (1994) Classe 1.1M (UNO I EMME), ÖNORM B 3825, Gruppe 1 - Schwerbrennbares Verhalten, ÖNORM A 3800 Teil 1, Qualmbildungsklasse Q1 - schwachqualmend, IMO FTP 2010 Code MSC.307 (88) Part 8 3.1 & 3.2, FMVSS 302, US: FAR 25/853, (MED) Marine Equipment Directive (in its current valid version), ECE R118.02 (replaces Directive 95/28/CE) Annexes 6, 7 & 8, EN 71-2:2006+A1:2007 - Safety of Toys - Parte 2: Flammability, CAL TB 117-2013, Section E
- Light Resistance: UV-Resistance XENOTEST DIN 54004/ NTC 1479

Visit www.spradling.eu for complete colours range / Visionate la completa gamma colori su www.spradling.eu

E Simil leather Aurea / Ecopelle Aurea



23

7

14

15

16

8



9

10

17

19

21

11

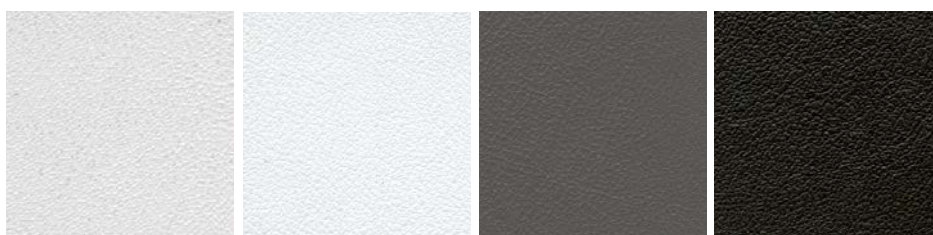


2

3

5

6



1

22

28

26

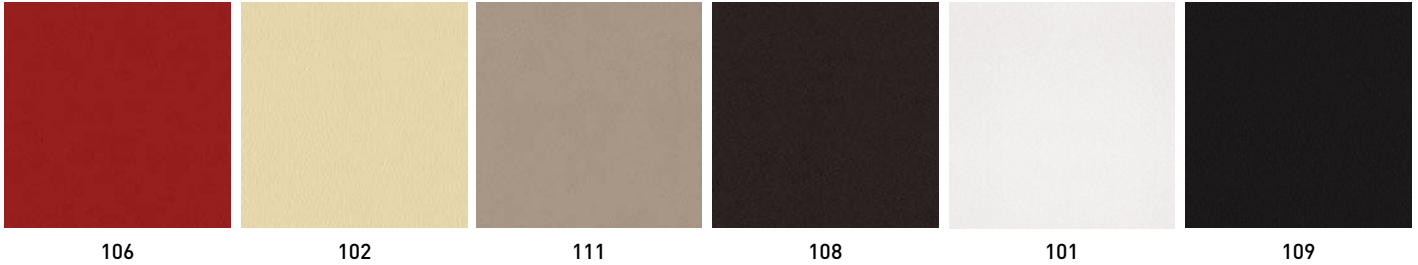
- Composition: 72% PVC - 3% PU - 25% COTTON
- Abrasion: EN ISO 5470-2 100.000 Cycle Martindale
- Light Resistance-Xenotest: UNI EN ISO 105-B02 / 6
- Fire proof: UNI 9175 classe 1IM, EN 1021-1, EN 1021-2, BS 5852-1 cigarette test, BS 5852-1 match test BS 5852 crib 5, TB 117:2013, IMO res. A.652(16)
- Maintenance: Dust gently or pass the surface with a damp cloth.

Visit www.flukso.it for complete colours range / Visionate la completa gamma colori su www.flukso.it

COLOURS AND FINISHES

COLORI E FINITURE

C Leather / Cuoio



- Composition: 100% Grain Leather, Italian tannery
- Light Resistance: IUF/101
- Fire proof: CAL TB 117-00, Section E -part 1; BS 5852/90 section 4 (CRIB 5); UNI 91/75 Classe 2IM
- Maintenance: Dust gently or pass the surface with a damp cloth.

P Leather / Pelle



- Composition: 100% Top Grain Leather, European tannery
- Light Resistance-Xenotest: UNI EN ISO 105-B02
- Fire proof: British Standard BS 5852 Part 1 (1979), Imo FTP:Part 8-Resolution A.652 (16), TB 117-A11@20132013 Cigarette Test (California)
- Maintenance: Dust with a soft and dry cloth.

Visit www.anicaleather.com for complete colours range / Visionate la completa gamma colori su www.anicaleather.com



GABER® LITERATURE

All Gaber literature contains technical information and use-suggestions for those who intend to purchase or already have bought items from the Gaber range. For Customers' interest, the Company may modify its products without any prior notice. Drawings, quote, sizes, materials, colors represented in Gaber Literature are shown as a guide only and subject to tolerances. The colors displayed in Gaber literature or palettes, including physical ones, related to technology, polymer finishing, fabrics, leather, lacquered or painted materials, wooden items, laminated and compactop materials, glass, marble and porcelains, may change from time to time: Gaber declines all responsibility in relation to slight differences in shades. Gaber reserves the right to suspend the production of any of its products without any notice or reason. Gaber is a registered trademark: all inherent rights and all rights of reproduction in whole or in part of Gaber literature, related to text, images or illustration, or transmitted by any means, electronic or mechanical, including photocopying, recording or any information storage without written permission from Gaber, are worldwide reserved.



DOCUMENTAZIONE GABER®

La documentazione Gaber contiene informazioni tecniche e consigli d'uso per chi vuole acquistare o possiede articoli della gamma prodotti Gaber. Nell'interesse della clientela Gaber si riserva il diritto di modificare i propri modelli in ogni momento, senza obbligo di preavviso. I disegni, le quote e le dimensioni, i materiali ed i colori rappresentati nella documentazione Gaber si intendono a titolo puramente indicativo, e soggetti a tolleranze. I toni di colore rappresentati o presenti nelle palette Gaber, anche fisiche, relativi a polimeri, rivestimenti di ogni genere, verniciature, laccature, laminati e compactop, vetri, essenze legno, marmi e porcellane, sono indicativi, in quanto passibili di variazioni da partita a partita: Gaber declina ogni responsabilità in relazione a leggere differenze di tonalità. Gaber si riserva inoltre il diritto di ritirare, sospendere o cessare la produzione di ogni suo prodotto o versione in qualsiasi momento e a sua discrezione senza darne preventivo avviso. Gaber è un marchio registrato: tutti i diritti ad esso inerenti o di riproduzione, anche parziale, di cataloghi e listini Gaber relativi a testi, immagini, illustrazioni, disegni, sia con mezzi meccanici che elettronici, incluso fotocopie o la formazione di sorgenti di informazione, senza il preventivo permesso scritto di Gaber, sono globalmente riservati.



DOCUMENTACION GABER®

Toda la documentación Gaber contiene una serie de informaciones técnicas y consejos para el utilize para quién quiera comprar o para quién posea productos pertenencias a la gama Gaber. En el interés de los clientes, Gaber se reserva el derecho de poder modificar o mejorar sus productos sin avisar antes. Los dibujos, las cuotas y las medidas, los materiales y los colores se ilustran exclusivamente a modo de ejemplo y son indicativos, sujetos a tolerancias. Las tonalidad de los colores de los muestrario, también físico, relativos a los polímero, las telas, pieles, pinturas, esencias de las maderas, laminados y compactop, mármol y porcelana, pueden variar según partida: Gaber declina todo tipo de responsabilidades con relación a pequeñas diferencias de color. Gaber se reserva además el derecho de retirar, suspender o cesar la producción de cualquier producto en cualquier momento y a propia discreción sin dar previo aviso. Gaber es una marca registrada y todos los derechos que hacen referencia a ella y los derechos de reproducción, incluso parcial, de los catálogos y listas de precios Gaber relativos a los textos, imagines, ilustraciones, diseños ya sea por medios mecánicos o electrónicos, incluyendo el fotocopiado o la formación de fuentes de información, sin el permiso previo por escrito de Gaber, son reservados a nivel mundial.



DOCUMENTATION GABER®

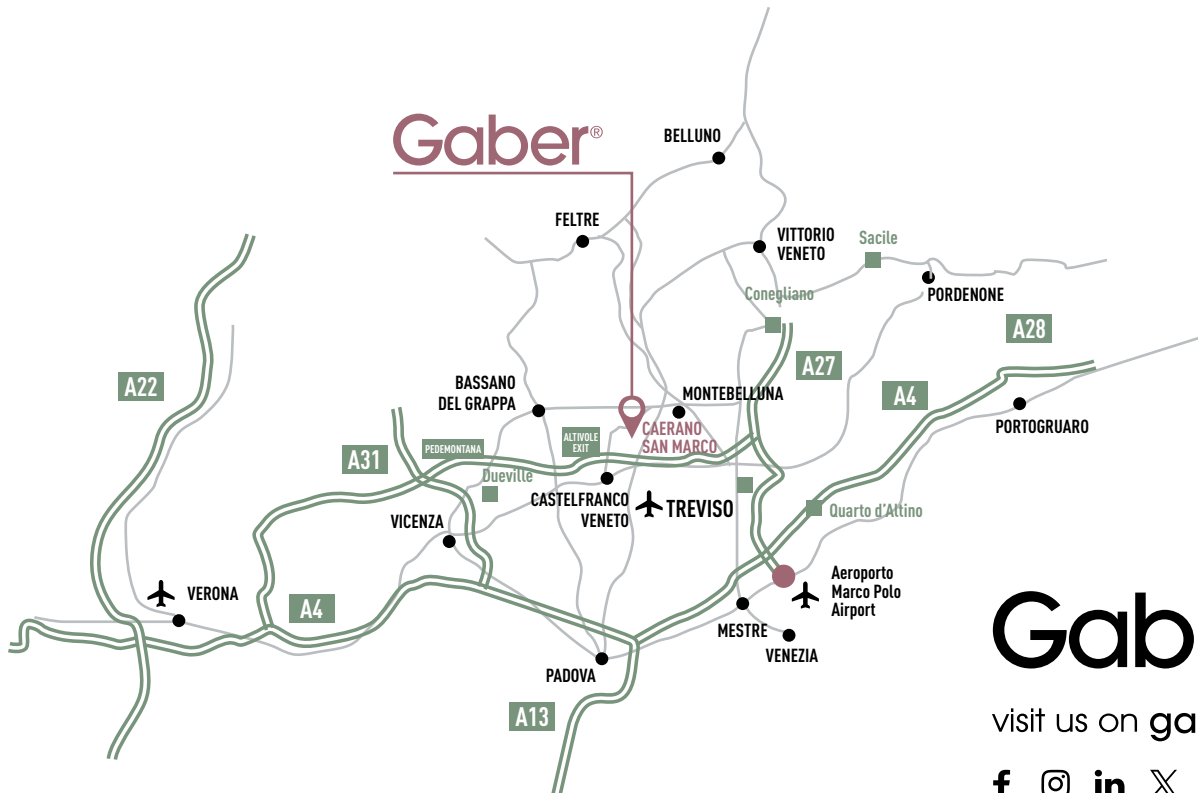
Notre documentation contient des informations techniques et des conseils pour l'utilisation des produits, s'adressant aux clients Gaber ou futurs clients. Dans l'intérêt de la clientèle, Gaber se réserve le droit de modifier ses modèles, à n'importe quel moment, sans aucun préavis. Les dessins, les cotes, les dimensions, les matériaux et les couleurs au sein de la documentation Gaber sont purement indicatifs et soumis à des tolérances. Les tonalités des couleurs de notre palette (papier et physique), relatives aux polipro, aux tissus, aux laques, vernis, mélamines, compact, essences de bois, marbres et porcelaine sont purement indicatives car elles peuvent varier d'un lot à un autre: Gaber décline toute responsabilité en ce qui concerne les différences de tonalité. Gaber se réserve le droit de retirer du catalogue, d'interrompre ou de cesser la production de tout article, sans aucun préavis et à tout moment. Gaber est une marque enregistrée: tout droit inhérent et de reproduction, même partiel, de catalogues et tarifs, relatif aux textes, images, illustrations, dessins, par des moyens mécaniques, électroniques, par photocopie, ou autre source d'information, sans le consentement préalable de Gaber, est globalement réservé.



GABER® DOKUMENTATION

Die Dokumentation von Gaber beinhaltet technische Informationen und Ratschläge zur Nutzung von Gaber Produkten für Kaufinteressenten bzw. für Besitzer von Artikeln, die zur Produktpalette von Gaber gehören. Im Interesse der Kunden behält sich Gaber das Recht vor, die eigenen Modelle jederzeit abzuändern, ohne Pflicht zur Vorankündigung. Die Zeichnungen, die Quoten und die Masse, die Materialien und die Farben der Dokumentation dienen lediglich als Information und unterliegen Toleranzen. Die dargestellten Farbtöne, auch die in den Farbpaletten, sowie die Lackierungen, Stoff-, Leder-, Lack-, Glas-, Laminat-, Compactop-, Marmor-, Porzellan- und Holzverkleidungen sind Indikativ, da von Fall zu Fall Änderungen möglich sind. Gaber lehnt jegliche Verantwortung in Verbindung mit Farbtonabweichungen ab. Gaber behält sich zudem das Recht vor, die Produktion jedes einzelnes Produkts zurückzuziehen, einzustellen bzw. abzutreten. Gaber ist eine eingetragene Marke. Alle damit verbundenen Rechte an der Reproduktion von Kataloge und Preislisten von Gaber, in Bezug auf Texte, Bilder, Illustrationen, Zeichnungen, die sowohl mit mechanischen als auch mit elektronischen Mitteln, Kopien inbegriffen, erfolgen sind weltweit Gaber vorbehalten und benötigen eine schriftliche Genehmigung von Gaber.

A.D. and Project:
studiobluart.it



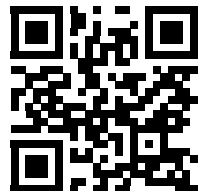
Gaber
Via Altivole, 3
31031 Caerano San Marco (TV)
ITALY
+39 0423 915521
info@gaber.it
gaber.it

Gaber®

visit us on gaber.it

f @ in X v p

Request
Gaber
Literature



Gaber®
gaber.it